

**Okmulgee County Cattlemen's Associations
BEEF PERFORMANCE PROGRAM**

- 1 Must be a Jr member of the Okmulgee County Cattlemen's Association**
- 2. Performance calves must be born in Okmulgee County or bred and raised by a cattle producer that has cattle headquarters in Okmulgee County.**
- 3. ALL PERFORMANCE STEERS IN OKMULGEE COUNTY JUNIOR LIVESTOCK SHOW must be weighed at official weigh-in at the Okmulgee County Free Fair in September and shown in steer show.**
- 4. Calves will be ear tagged during the program.**
- 5. Minimum weight at Spring Weigh Out is 1000 pounds or animals will be disqualified from the performance steer program. 10 pound variance is allowed for scale variance**
- 6. Weigh-in at designated time. Calves will be given free choice hay and water overnight prior to the weigh-in (fall only).**
- 7. Each exhibitor may enter two (2) steers in the Performance Program.**
- 8. Performance on foot classes for Spring Show will be determined by weight at weigh-in (in the spring)**
- 9. Final results of the performance contest will be announced at Carcass Sale.**
- 10. NO cash awards will be presented to calves that do not finish the entire program. NO cash awards will be given until the end of the program.**

RATE OF GAIN – Maximum of 35 points

- 11. Calves will be tied in the barn at 8:00 p.m. day before weight in without feed or water preceding weigh-out at approximately 12 hours later.**
- 12. Average daily rate of gain will be determined at the end of the feeding period by dividing the number of days fed into total pounds gained.**
- 13. Rate of gain points will be determined by formula.**

ON FOOT SHOW – Maximum of 15 points

- 14. Performance steers may show in regular steer classes.**

15. The performance steer judge in the spring (selected by the Okmulgee County Cattlemen's Association Jr. Livestock Show Committee) will then place steers for points (similar to sale order). All steers will be placed and points will be determined by formula.

CARCASS PHASE – Maximum 50 points

16. All performance steers will be hauled to the processing plant.
17. Carcass data will be collected by grader and OSU Beef Specialist.
18. Slide photo of rib-eye will be taken by Okmulgee County Cattlemen's Association Livestock Show Committee.
19. Value of each carcass will be calculated and points for each carcass will be determined by carcass formula

CARCASS SALE

20. A date approximately two (2) weeks after steers are slaughtered will be selected.
21. Slides may be shown of live animal and rib-eye. Exhibitor will be present in front of the room when carcasses are sold.
22. All trophies and Cattlemen's Association cash awards will be presented at the Carcass Sale.
23. Sell half (1/2) carcass at a time. Buyers option on the other half.
24. Purchaser of the carcass is responsible to pay for processing.

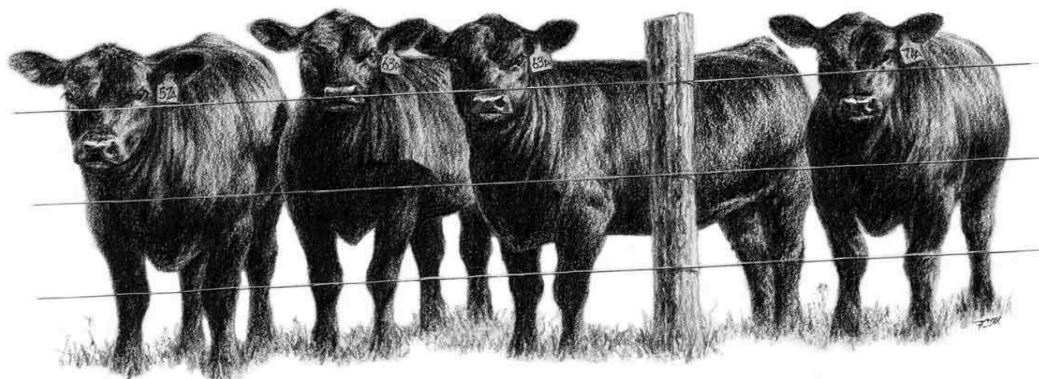
MARKET STEER RECORD

OKMULGEE COUNTY BEEF PERFORMANCE PROGRAM

SPONSORED BY:

OKMULGEE COUNTY CATTLEMEN'S ASSOCIATION

OSU Cooperative Extension Service - Division of Agriculture - Oklahoma State University



Name_____ Age_____

Address_____ Zip_____ Phone_____

County_____

Breed or color of your steer_____ His Name_____

Breeder's name (if known)_____

Breeder's address_____

4-H Club or FFA Chapter_____

Parent's Signature_____

FEEDING RECORD FOR YOUR STEER

Please Note: All records, weights, expenses, ect. Below should be from the date of the official weigh in until the weigh out at the Okmulgee County Spring Livestock Show.

1. You must have a beginning and end weight (The total days from beginning to end is 160 days)

	WEIGHT	GAIN
Beginning	A _____	(B-A) _____
End	B _____	

2. Pounds of feed used and how much it cost.

Pounds of feed	Pounds of Protein Supplement	Pounds of Hay	Cost
_____	_____	_____	_____
_____	_____	_____	_____
_____	_____	_____	_____
_____	_____	_____	_____
_____	_____	_____	_____
_____	_____	_____	_____

Total Feed Cost (Add Cost Figures) D \$ _____

3. Other costs - please include the initial cost of your steer.

\$ _____

Minerals, vitamins, salt, and other special foods

\$ _____

Veterinary costs - shots, worming, grub & lice control implants

\$ _____

4. Total feed and other costs (add costs together)

F \$ _____

5. Income

Sale Price E \$ _____

Profit(F-E) H \$ _____

6. Performance Record

Days on feed (beginning date to Showtime from)

_____160_____days

Average daily gain (total gain ÷ total days)

_____lbs.

This may be answered on an attached sheet.

7. Management Practice:

(a) Parasite control - list the dates and products used.

List worming dates, products used, and how it was applied.

(b) List other management practices - such as hoof trimming, implants, identification, and treatment of ringworm, bloat, scours, and any other healthcare practices.

8. Feeding:

(a) What kind of feed did you feed?

(b) How much feed did you give each day?

(c) Did you feed any hay?

(e) What percentage of protein did your feed contain?